

MK000061=ASLSM4

Marker: ASLSM4

Type: PCR

Description: PCR marker designed from

Reference: submitted as "Rapid Characterization of Garlic Clones with Locus Specific DNA Markers" to the 5th International Symposium on Edible Alliaceae

Primers: As-Leafy-F (AS_Leafy3').....5'-CGAGAAACTCACGGCACTGCTC-3'
As-Leafy-R (AS_Leafy5').....5'-TCCTCGTCGGTGAACGCTATGG-3'

PCR Reaction: 25 µl: [60 ng DNA; 0.8 µM each primer=20 pMol each; 0.05 U/µl Taq=1.25 U; 2? mM MgCl₂=50 nMol; 0.2 mM each dNTP=5 nMol]

PCR Program: 95°C 2:00; 40 cycles of {94°C 0:30; 58°C 1:00; 72°C 2:00}; 72°C 5:00; 4°C hold.

Screening Method: 4% AGAROSE SFR™ (Amresco Inc., Solon, Ohio, USA) in 1× Tris-Borate (TBE)

Product Sizes:

Example:

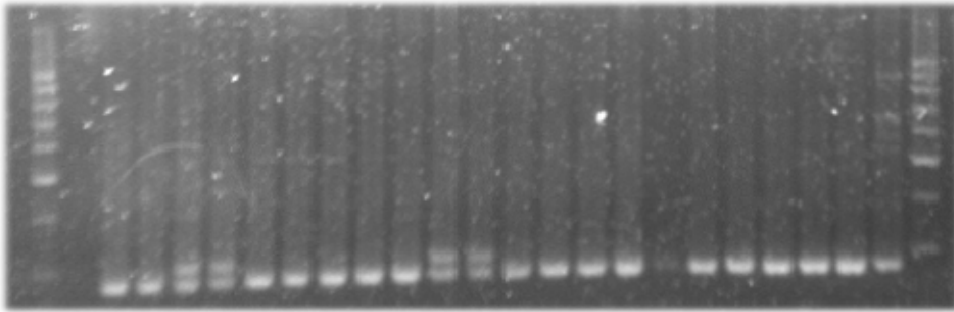


Diagram of how it works:

Genbank reference:

Sequence Information:

Map Location:

Published Reference:

Other Information:

Primer Location (lab specific): AS_Leafy3'@Bx8:C6; AS_Leafy5'@Bx8:D6

PCR Program Name (lab specific):